

前进中的国望激光产品不断研发更新中，设备以实物为准
The advanced Guowang laser products are under continuous R & D and updating,
and the equipment shall be subject to the real object

销售咨询热线

400-180-6833



中国·国望集团
国望激光科技(浙江)有限公司

浙江省平阳县万全镇振兴西路368号
国内运营中心：0577-58111088，58111089 传真：0577-58111090

WWW.GUOWANG.COM

CHINA·GUOWANG GROUP
GUOWANG LASER TECHNOLOGY (ZHEJIANG) CO., LTD

No. 368, Zhenxing West Rd., Wanguan Town,Pingyang County, Zhejiang Province
Domestic Operation Center: 0086-577-58111088, 58111089 Fax: 0086-577-58111090

WWW.GUOWANG.COM

Version 2024.01

重新定义激光装备价值
REDEFINE THE VALUE OF LASER EQUIPMENT



国望激光
GUOWANG LASER



INDUSTRY 4.0

创造激光行业新机遇
Lead the laser cutting industry new opportunities



KEEP IMPROVING TO WIN MORE EXPECTATION

不断超越，才能赢得更多期待

THE PURSUIT OF ULTIMATE QUALITY
TO SHAPE THE NATIONAL BRAND
追求極致品質 塑造民族品牌

中国·国望集团成立于1993年，是一家集研发、设计、生产、销售、服务为一体的机械装备综合体。近30年发展积累，现有工厂占地面积近16万平方，建筑面积超20万平方的现代化标准工厂。并在浙江、上海、广东分别拥有7家子公司，在全国设有97个销售、售后服务网点，在全球设有100多个代理商、经销商。

公司按照德国标准及架构，执行5S现场管理模式。公司引进瑞士斯达拉格、日本大隈、山崎马扎克、东芝、新精机、池贝、日本三菱大型龙门铣床、五轴加工中心、五面体加工中心等国际先进大型加工设备，及瑞士海克斯康三坐标检测仪、英国雷尼绍激光干涉仪等检测设备共100多台套，配套设备总价值近5亿元。强大的加工集群是您设备品质的坚定保证。

国望激光通过ISO9000质量控制体系，主要产品均已通过欧盟CE以及德国TUV认证，汇集全球优势资源，融合国际前沿激光技术，精益求精全力打造新一代GW-Fiber系列激光装备，以高精度、高效率、低能耗、重新定义激光装备价值，赋予用户强大的市场竞争力，为用户创造价值。

China, Guowang Group was established in 1993, is a collection of research and development, design, production, sales, service as one of the machinery and equipment complex. Nearly 30 years of development and accumulation, the existing factory covers an area of 160,000 square meters, the construction area of more than 200,000 square meters of modern standard factory. And in Zhejiang, Shanghai, Guangdong have 7 subsidiaries, in the country with 97 sales, after-sales service outlets, in the world with more than 100 agents, dealers.

The company implemented the 5S field management mode according to German standards and structure. Company imports and adopts Wei trager, Osaka, Japan, Switzerland yamazaki mazar-e-sharif, Toshiba, new machines, ChiBei, Mitsubishi's large gantry milling machine, five axis machining center, pentahedron machining centers and other international advanced large-scale processing equipment, and the Swiss Banks, three coordinates detector, such as the laser interferometer is British rennie shaoxing testing equipment more than 100 sets of equipment worth nearly 500 million yuan. Powerful processing cluster is a firm guarantee of the quality of your equipment.

Guowang laser through the ISO9000 quality control system, the main products have passed the European Union CE and Germany TUV certification, the integration of global advantages of resources, integration of international forefront laser technology, strive for excellence to create a new generation of GW-Fiber series laser equipment, With high precision, high efficiency, low energy consumption, redefine the value of laser equipment, give users strong market competitiveness, create value for users.

UNIVERSITY-ENTERPRISE COOPERATION

校企合作

温州大学平阳智能制造研究院

温州大学1933年成立，孕育了一批批高精尖的科技人才，与国望集团强强联合，定向培养、共同研发，为中国制造大国到制造强国而不断努力！

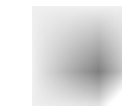
Founded in 1933, Wenzhou University has bred a batch of advanced scientific and technological talents, and has cooperated with the powerful guo-wang Group, directed training and joint research and development, making continuous efforts for China's manufacturing power to manufacturing power!



科学技术部激光加工机器人
国家级国际科技合作基地



浙江大学温州技术转移中心
平阳科技大市场



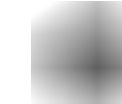
中国计量大学
平阳工业设计研究院



上海大学上海新材料
协同创新中心平阳基地



武汉大学
平阳创新中心



温州大学研究生
联合培养基地



温州市院士专家工作站



平阳云创众空间



FINE QUALITY MANAGEMENT MODE

精细化品质管理模式



高效管理
Efficient management



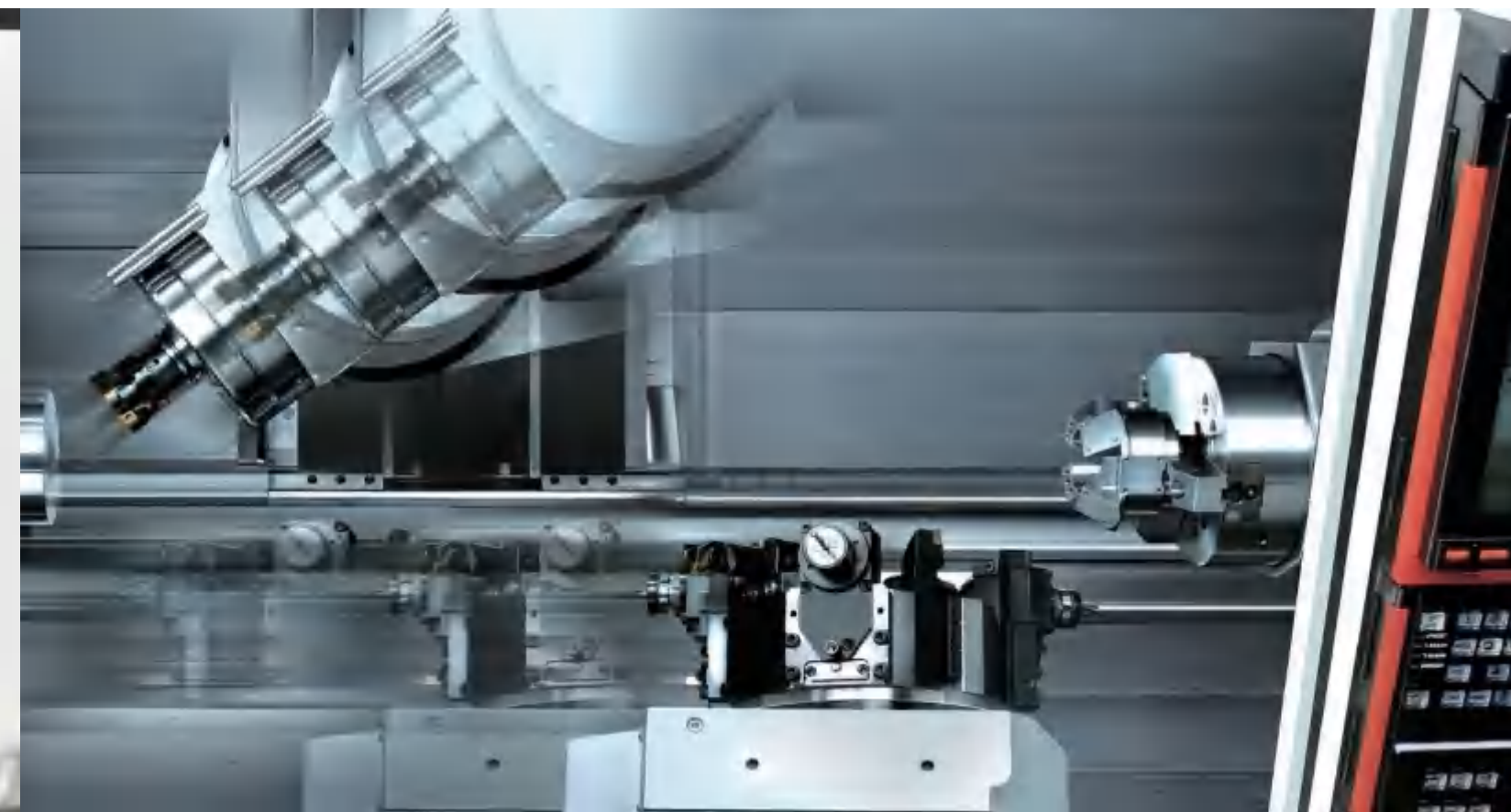
研发能力
R&D Ability



制造水平
Manufacturing Level



可靠测试
Reliable Test



ADVANCED INDUSTRIAL MANUFACTURING CLUSTERS

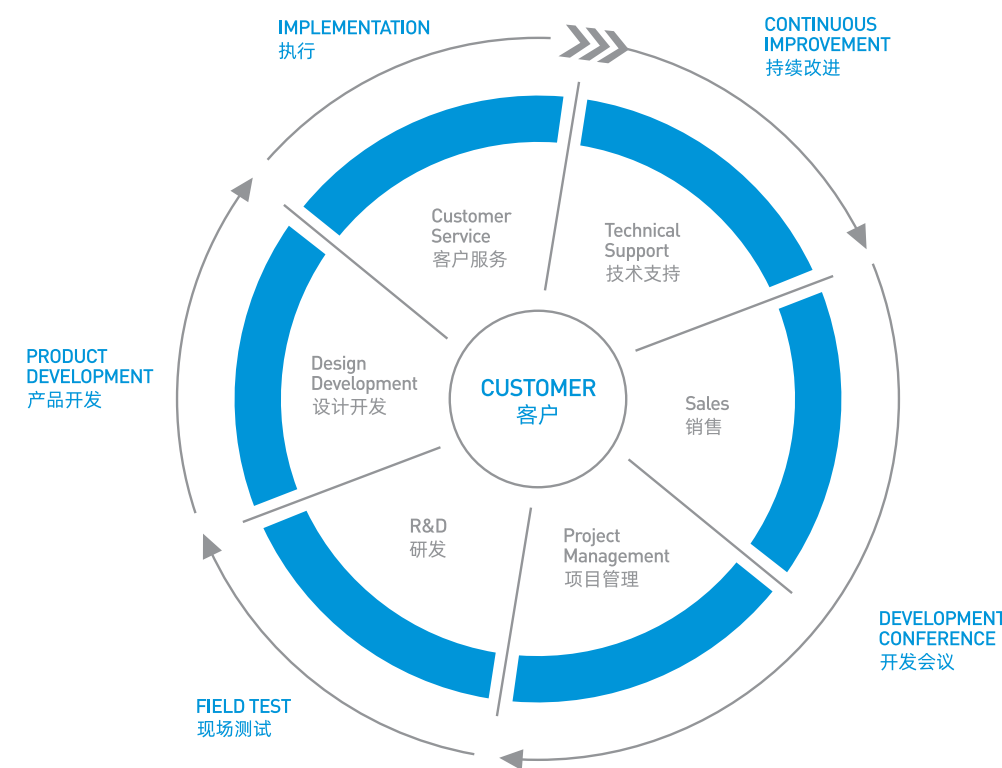
先进的工业制造集群

国望集团花巨资引进MITSUBISHI大型龙门铣床9台，MAZAK五轴加工中心/五面体加工中心28台，OKUMA龙门研磨加工中心12台，ARM、ASTARRAG卧式加工中心38台，DMG、TOSHIBA等大型加工设备，以及HEXAGON三坐标测量机5台，RENISHAW激光干涉仪/准直仪8台，如此巨大的投入，只因对产品高精度及高品质的执着追求。

Guobang Group has invested heavily in introducing 9 MITSUBISHI large gantry milling machines, 28 MAZAK five-axis machining centers/pentahedral machining centers, 12 OKUMA Gantry grinding and machining centers, 38 PARM and ASTARRAG horizontal machining centers, DMG, TOSHIBA and other large processing equipment. And 5 HEXAGON CMM and 8 RENISHAW laser interferometer/collimator. Such a huge investment is due to the persistent pursuit of high precision and high-quality products.

CUSTOMER FOCUS

以客户为中心



国望集团机械研究院，从外观设计、机械结构、电气控制、光学、传感、软件开发，我们有60多人的研发团队，1993年至今近30的经验积累，保证了国望激光设备的稳定性、可靠性，为每一位用户提供超越期待的激光装备。

我们遍布全球的销售、售后网络，并对技术人员进行系统的定期培训，提高专业技能。以确保我们在切割领域的工艺优势，为我们的用户提供更专业、更高效的服务。

Guowang Group Machinery Research Institute, from the appearance design, mechanical structure, electrical control, optics, sensing, software development, we have more than 60 people r & D team, 1993 to nearly 30 years of experience accumulation, to ensure the stability of guowang laser equipment, reliability, Provide every user with laser equipment that exceeds expectations.

We have a worldwide sales and after-sales network, and provide systematic and regular training for technical personnel to improve their professional skills. To ensure our leading edge in the field of cutting, to provide our users with more professional, more efficient services.



GW-P2560BS

Fully enclosed ultra-high power laser cutting machine
全包围式超高功率激光切割机

GW-P2580BS / GW-P25100BS / GW-P25120BS



创新技术 INNOVATIVE TECHNOLOGY

- 全新X型板焊结构，机床抗高热技术，确保超高功率下机床稳定性和耐用性；
 - 超高功率专用切割头，支持连续稳定切割；
 - 无渣快速穿孔，高速切割、厚板亮面切割技术；
 - 可选配坡口切割功能。
- New X plate welding structure, high heat resistance technology, to ensure the stability and durability of machine tools under ultra-high power.
 - Ultra high power special cutting head, support continuous and stable cutting.
 - Slag-free rapid perforation, high speed cutting, thick plate bright cutting technology.
 - Optional groove cutting function.

技术参数	Technical Parameters				
型号	Model	GW-P2560BS	GW-P2580BS	GW-P25100BS	GW-P25120BS
激光功率	Laser Power	12000W	/ 15000W	/ 20000W	/ 30000W
加工行程	Processing Stroke	2500×6000mm	/ 2500×8000mm	/ 2500×10000mm	/ 2500×12000mm
机械定位精度	Mechanical Positioning Accuracy	±0.03mm			
X.Y重复定位精度	X.Y Axis Repositioning Accuracy	±0.02mm			
最大定位速度	Maximum Positioning Speed	200m/min			
最大复合加速度	Maximum Composite Acceleration	2.2G			
最小切缝	The minimum cutting seam	≥0.2			
整机耗电功率	Total Electrical Consumption	55KW	/ 65KW	/ 80KW	/ 95KW
电力需求	Power Supply	AC380V / 50Hz / 60Hz / 100A			
坡口切割功能	Bevel Cutting Function	可选配Optional			

Fully enclosed high power laser cutting machine
全包围式高功率激光切割机



- 机床650度高温时效处理，24小时自然冷却，机床更坚固耐用；
- 挤拉航空铝横梁，高强度、轻量化，响应更迅速；
- 超快切割、尖角工艺、飞行穿孔，效率提高20%；
- 配置无线手持盒，操作灵活便捷。

- 650 degrees high temperature aging treatment, 24 hours of natural cooling, the machine is more durable.
- Extruded aviation aluminum beam, high strength, lightweight, faster response.
- Ultra-fast cutting, sharp corner technology, flying perforation, efficiency increased by 20%.
- Wireless handheld box, flexible and convenient operation.

技术参数	Technical Parameters								
型号	Model	GW-P2040BS		GW-P2060BS		GW-P2560BS		GW-P2580BS	
激光功率	Laser Power	6000W /		8000W /		10000W /		12000W	
加工行程	Processing Stroke	2000×4000mm /		2000×6000mm /		2500×6000mm /		2500×8000mm	
机械定位精度	Mechanical Positioning Accuracy	±0.025mm							
X.Y重复定位精度	X.Y Axis Repositioning Accuracy	±0.02mm							
最大定位速度	Maximum Positioning Speed	160m/min							
最大复合加速度	Maximum Composite Acceleration	1.7G							
最小切缝	The minimum cutting seam	≥0.15							
整机耗电功率	Total Electrical Consumption	35KW /		40KW /		46KW /		55KW	
电力需求	Power Supply	AC380V / 50Hz / 60Hz / 80A							

Fully enclosed medium power laser cutting machine 全包围式中功率激光切割机



- 全封闭包围设计，安全防护，分区抽尘更环保；
- 互换式快速交换工作台，提高加工效率；
- 定时自动供油，机床运行更流畅，确保机床长久精度；
- 一键标定、自动寻边、自动排版等功能强大。

- Fully enclosed and surrounded design, safety protection, partition dust extraction more environmental protection.
- Interchange type quick exchange table, improve processing efficiency.
- Timing automatic oil supply, machine running more smoothly, to ensure machine long precision.
- One key calibration, automatic edge search, automatic typesetting and other powerful functions.

技术参数	Technical Parameters				
型号	Model	GW-P1530BS	GW-P2040BS	GW-P2060BS	GW-P2560BS
激光功率	Laser Power	3000W /	4000W /	6000W /	8000W
加工行程	Processing Stroke	1500×3000mm /	2000×4000mm /	2000×6000mm /	2500×6000mm
机械定位精度	Mechanical Positioning Accuracy	±0.025mm			
X.Y重复定位精度	X.Y Axis Repositioning Accuracy	±0.02mm			
最大定位速度	Maximum Positioning Speed	160m/min			
最大复合加速度	Maximum Composite Acceleration	1.7G			
最小切缝	The minimum cutting seam	≥0.1			
整机耗电功率	Total Electrical Consumption	25KW /	28KW /	35KW /	40KW
电力需求	Power Supply	AC380V / 50Hz / 60Hz / 60A			

GW-P1530D

GW-P2040D / GW-P2060D / GW-P2560D

Open fiber laser cutting machine
开放式光纤激光切割机



机型特点 MODEL FEATURES

- 龙门式一体化结构，设计紧凑，节约场地；
 - 配备电子比例阀，低气压、低成本，更省气体；
 - 防碰撞功能，确保运行安全顺畅。
- Gantry integrated structure, compact design, saving space.
 - Equipped with electronic proportional valve, low pressure, low cost, more gas saving.
 - Anti-collision function ensures safe and smooth operation.

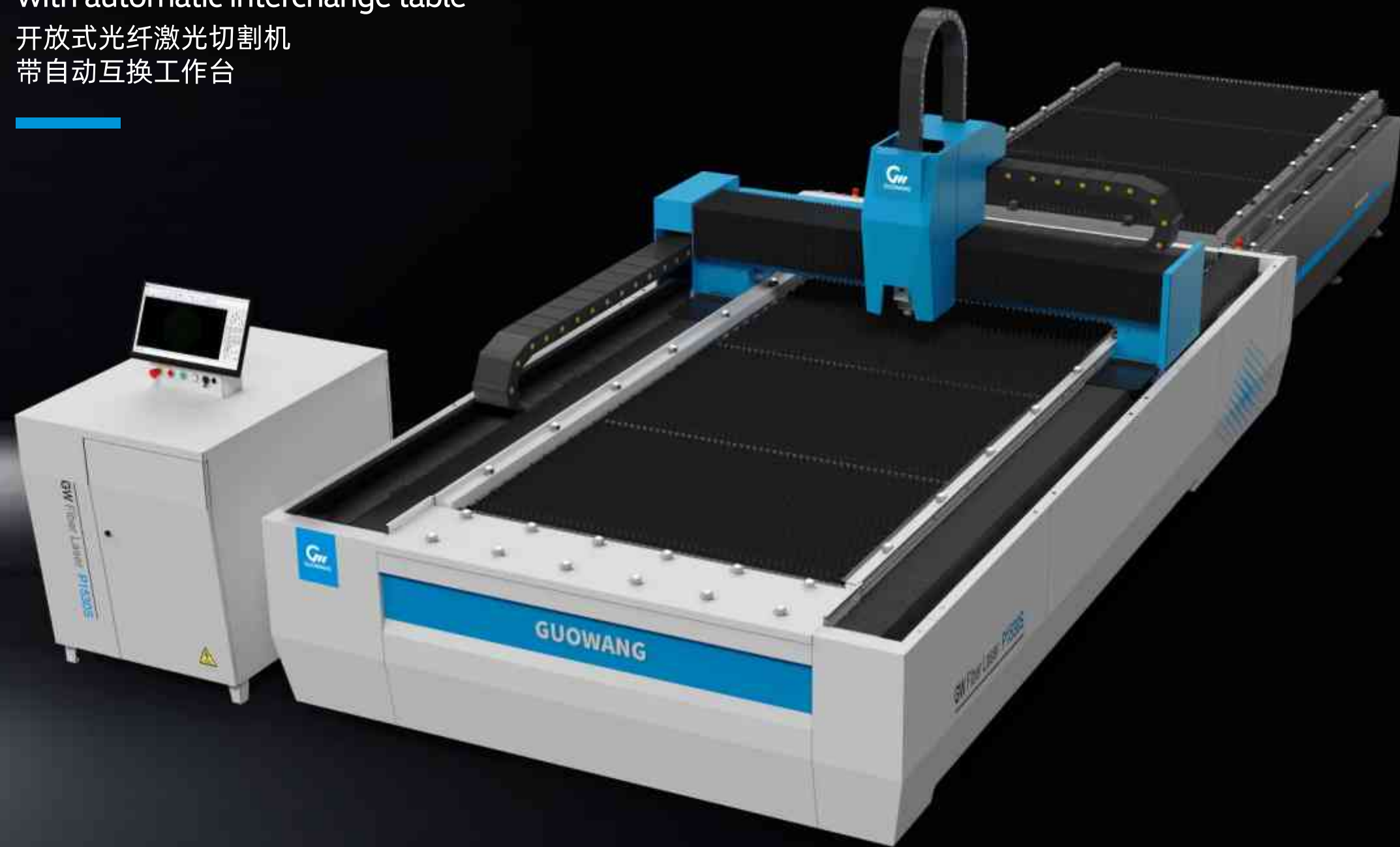
技术参数	Technical Parameters								
型号	Model	GW-P1530D		GW-P2040D		GW-P2060D		GW-P2560D	
激光功率	Laser Power	1500W /		3000W /		4000W /		6000W	
加工行程	Processing Stroke	1500×3000mm /		2000×4000mm /		2000×6000mm /		2500×6000mm	
机械定位精度	Mechanical Positioning Accuracy	±0.025mm							
X.Y重复定位精度	X.Y Axis Repositioning Accuracy	±0.02mm							
最大定位速度	Maximum Positioning Speed	160m/min							
最大复合加速度	Maximum Composite Acceleration	1.7G							
最小切缝	The minimum cutting seam	≥0.1							
整机耗电功率	Total Electrical Consumption	15KW /		25KW /		28KW /		35KW	
电力需求	Power Supply	AC380V / 50Hz / 60Hz / 60A							

GW-P1530S

GW-P2040S / GW-P2060S / GW-P2560S

Open fiber laser cutting machine
with automatic interchange table

开放式光纤激光切割机
带自动互换工作台



性能优势 PERFORMANCE ADVANTAGE

- 高度集成电控，可以应对不同场地的空间布置；
 - 板材切割区及自动互换台三面开放，上下材料自由灵活；
 - 完整的切割工艺数据库，快速穿孔，高效切割。
- Highly integrated electronic control, can cope with the space layout of different sites.
 - Plate cutting area and automatic exchange table open on three sides, free and flexible materials up and down.
 - Complete cutting process database, fast piercing, efficient cutting.

技术参数	Technical Parameters						
型号	Model	GW-P1530S		GW-P2040S		GW-P2060S	GW-P2560S
激光功率	Laser Power	1500W	/	3000W	/	4000W	6000W
加工行程	Processing Stroke	1500×3000mm	/	2000×4000mm	/	2000×6000mm	2500×6000mm
机械定位精度	Mechanical Positioning Accuracy	±0.025mm					
X.Y重复定位精度	X.Y Axis Repositioning Accuracy	±0.02mm					
最大定位速度	Maximum Positioning Speed	160m/min					
最大复合加速度	Maximum Composite Acceleration	1.7G					
最小切缝	The minimum cutting seam	≥0.1					
整机耗电功率	Total Electrical Consumption	15KW	/	25KW	/	28KW	35KW
电力需求	Power Supply	AC380V / 50Hz / 60Hz / 60A					

GW-G2260

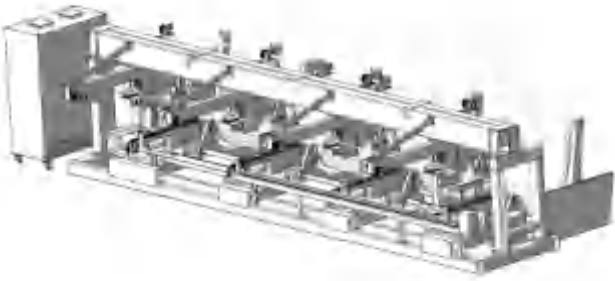
GW-G3560 / GW-G22120 / GW-G35120

Professional laser pipe cutting machine
专业激光切管机



可选配自动上料库 OPTIONAL AUTOMATIC FEEDING SILO

可配备自动上下料系统，兼容性强，多种规格管材可自动上料。节省人工成本，提高切管效率。
Can be equipped with automatic loading and unloading system, strong compatibility, a variety of specifications of pipe can be automatic feeding. Save labor cost and improve pipe cutting efficiency.



技术参数	Technical Parameters				
型号	Model	GW-G2260	GW-G3560	GW-G22120	GW-G35120
卡盘选择	Chuck Choice	两卡T / 三卡E / 四卡F			
激光功率	Laser Power	1500W /	2000W /	3000W /	40000W
加工行程	Processing Stroke	Φ15-220×6200mm /	Φ15-350×6200mm /	Φ15-220×12200mm /	Φ15-350×12200mm
X.Y重复定位精度	X.Y Axis Repositioning Accuracy	±0.03mm			
X.Y轴最大定位速度	Maximum Positioning Speed of axes X&Y	260转/分 260 Round/Min			
A1 、A2轴行程	Range of axes A1&A2	N×360°			
A1 、A2轴定位精度	Positioning Accuracy of axes A1&A2	±0.03°		±0.05°	
旋转U轴重复定精度	Rotating U-axis Repeat Precision	≤5弧分 ≤5Arcmin			
整机耗电功率	Total Electrical Consumption	18KW /	20KW /	27KW /	30KW
电力需求	Power Supply	AC380V / 50Hz / 60Hz / 60A			
坡口切割功能	Bevel Cutting Function	可选配Optional			



专精品质，倍受全球众多客户信赖
Professional quality, trusted by many customers all over the world

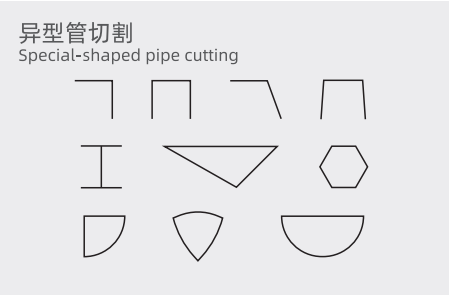
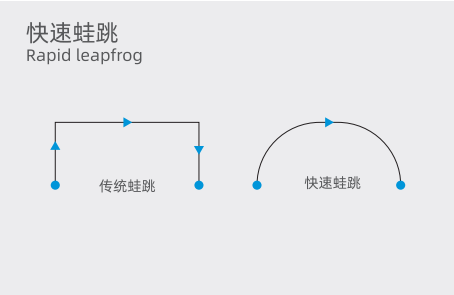
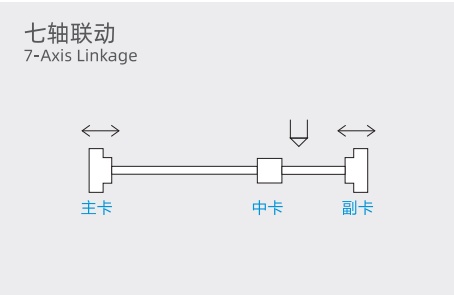
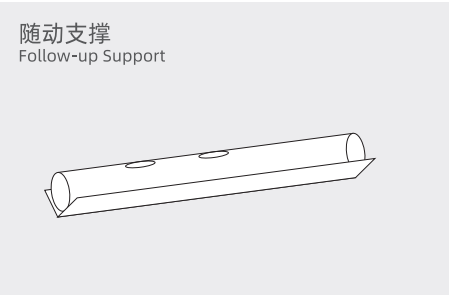
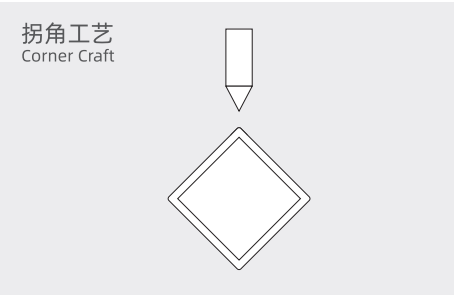
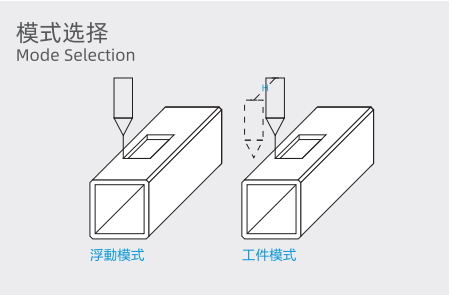
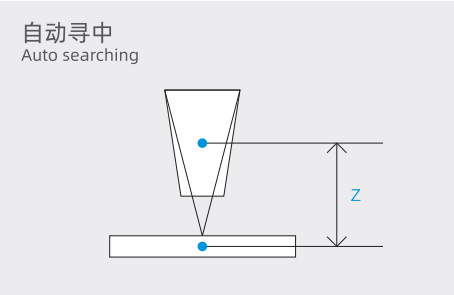


国望专业激光切管机优势 Advantages of Guowang laser professional pipe cutting machine



- 总线数控系统，支持编码器实时反馈，毫秒响应，加工更高效；
- 完整的管材工艺数据库，无论材质、厚薄、长短、形状，快速切换，优化切割质量；
- 自动夹紧，自动定心，保证长管送料更精准；
- 上料、下料随动支撑，避免U轴旋转的甩绳效应，提高管材加工精度；
- 专业研发前卡位移，两卡也能实现三卡的功能，短尾料切割，更省材料；
- 灵活多样的自动排序功能，分层切割、渐进穿孔、割缝补偿等，功能强大；
- 可选配自动料库系统，及坡口切割功能。

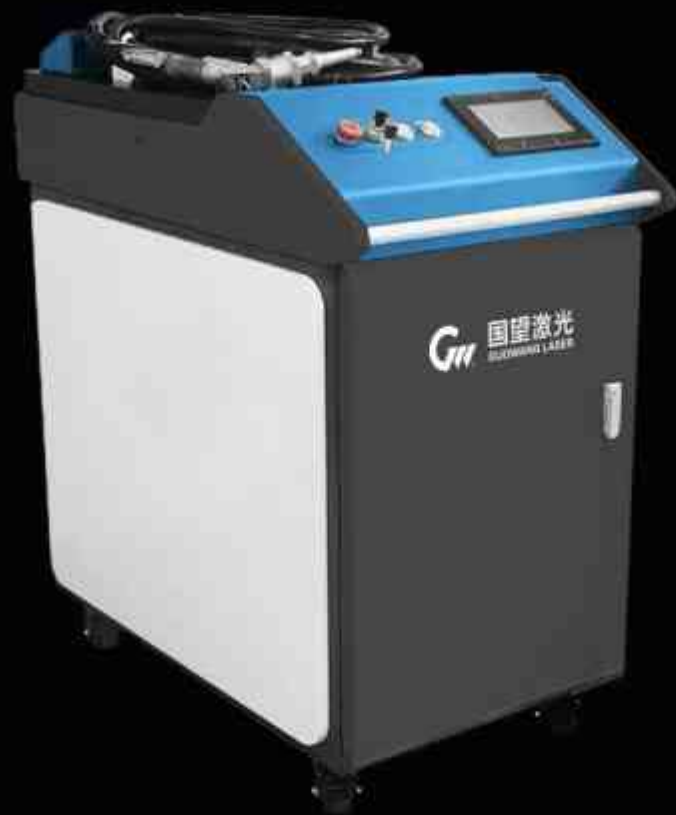
- Bus CNC system, support encoder real-time feedback, millisecond response, more efficient processing.
- Complete pipe technology database, regardless of material, thickness, length, shape, fast switching, the best cutting quality.
- Automatic clamping, automatic centering, ensure long tube feeding more accurate.
- Feeding and discharging follow up support, avoid the rope swing effect of U axis rotation, improve the machining accuracy of pipe.
- China's first front card movement, two cards can also achieve the function of three cards, short tail cutting, save more materials.
- Flexible and diversified automatic sorting functions, hierarchical cutting, progressive perforation, slit compensation, etc., powerful.
- Optional automatic material storage system and groove cutting function.



GW-H1000

GW-H1500 / GW-H2000 / GW-H3000

Hand-held laser welding machine
手持式激光焊接机



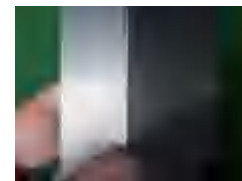
25 / 26 重新定义激光装备价值



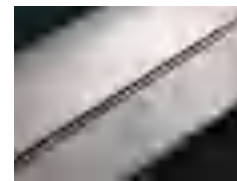
- 一体化设计：依工作区域轻松移动主机；
- 焊接工艺数据库：非专业焊工也能轻松上手；
- 内置摆动焊接头：更宽泛的焊缝宽度选择，焊接更牢固；
- 红外线定位：更直观的焊接头位置校准，及焊接时的位置验证；
- 智能安全互锁：确保激光安全措施，操作人员使用更安全；
- 焊接质量高：铁板、不锈钢板、铝板等完美焊接，速度快、无焊痕、无气孔、无变色、免打磨。

- Integrated design: easily move the mainframe according to the working area.
- Welding process database: easy for non-professional welders.
- Built-in swing welding head: wider selection of weld width, welding more firmly.
- Infrared positioning: more intuitive welding joint position calibration, and welding position verification.
- Intelligent safety interlock: extreme laser safety measures to ensure the safety of operators.
- High welding quality: iron plate, stainless steel plate, aluminum plate and other perfect welding, fast speed, no welding marks, no pores, no discoloration, no polishing.

技术参数	Technical Parameters				
型号	Model	GW-H1000	GW-H1500	GW-H2000	GW-H3000
激光功率	Laser Power	1000W	/	1500W	/
功率调节范围	Power Adjustable Range	10~100%			
光纤长度	Fiber Length	10m			
红光指示	Red Light indication	标配Standard			
自动送丝装置	Automatic Wire feed	标配Standard			
焊缝宽度	Weld Width	可调Adjustable			
焊机速度范围	Welding Speed Range	0~120 mm/s			
激光工作模式	Laser Working Mode	连续/调制Continuous/Modulation			
冷却方式	Cooling Method	循环水冷Cycle Water cold			
整机耗电功率	Total Electrical Consumption	7KW	/	9KW	/
电力需求	Power Supply	AC220V/380V / 50Hz / 60Hz / 60A			



1.6mm外角焊
Outside, welding



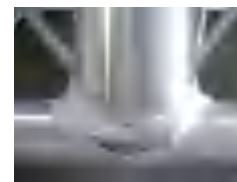
2mm内角焊
Inside welding



0.8mm叠焊
Overlap welding



3mm不锈钢直缝焊
SUS Straight seam welding



铝材圆弧焊
Circular arc welding of aluminum



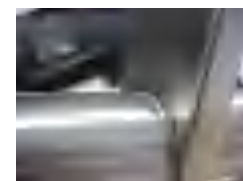
碳钢圆弧焊
Round arc welding of carbon steel



5mm配件焊接
Accessories welding



配件焊接
Accessories welding



货架焊接
Shelves welding

Guowang laser X-type structural plate welding high strength machine tool

国望激光X型结构板焊高强度机床



Z轴模块航空铝铸造，整体性好，高强度、轻量化，提高Z轴定位精度。
Z-axis module aviation aluminum casting, good integrity, high strength, lightweight, improve Z axis positioning accuracy.



国望激光所有机型龙门架采用航空铝挤拉一次成型，高强度、轻量化，使X轴响应更迅速。

The gantry frame of all models of guwang laser adopts aviation aluminum extrusion and pull-forming at one time, and high temperature aging treatment at two times, with high strength and light weight, which makes X axis response faster.

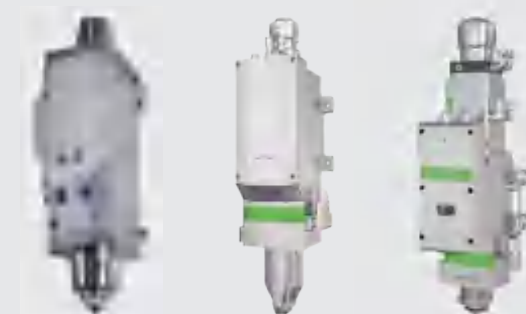
- 经过数控电炉650度高温时效处理，24小时自然冷却，完全消除机床焊接应力；
 - 大型龙门铣床一次成型，经龙门磨床研磨加工，确保机床两边的一至性及高精度；
 - 机床覆盖防烧板，阻挡激光余热对机床的影响，防止机床热变形；
 - 分区抽尘箱体，激光余热在抽尘箱体内流动抽走，提高机床寿命；
 - 自动供油润滑系统，减少机床的热吸收，保证机床长期的运行精度。
- Guowang Laser X-Type Plate Welding Structure High Strength Machine Tool
After 650 degrees high temperature aging treatment of CNC electric furnace, 24 hours of natural cooling, completely eliminate the welding stress of machine tool;
 - Large gantry milling machine a molding, the gantry grinder grinding processing, to ensure the uniformity and high precision of both sides of the machine;
 - The machine is covered with anti-burning plate to prevent the influence of laser waste heat on the machine and prevent the thermal deformation of the machine;
 - Partition dust pumping box, laser waste heat flow in the dust pumping box, improve the service life of the machine;
 - Automatic oil supply and lubrication system, reduce the thermal absorption of machine tools, to ensure long-term operation accuracy of machine tools.

优选配件 PREFERRED ACCESSORIES

国际国内一线品牌激光器 International and domestic first-line brand laser



智能总线切割头 Smart Cutting Head



- 非接触式传感器，自动检测板材实际位置；
 - 自动准直聚焦，更换材料无需等待，让加工更高效；
 - 自动定位、自动跟随，防撞、避让等功能；
 - 无级变焦穿孔，使厚板穿孔效率提高3-5倍；
 - 温度、气压实时监测，保证切割断面质量；
 - 随动焦点补偿，控制焦点位移，保证连续切割的稳定性。
- Non-contact sensor, automatic detection of actual plate position.
 - Automatic collimation focusing, no waiting for material replacement, making processing more efficient.
 - Automatic positioning, automatic following, collision avoidance, collision avoidance and other functions.
 - Stepless zoom perforation improves the efficiency of thick plate perforation by 3-5 times.
 - Real-time monitoring of temperature and pressure ensures cutting section quality.
 - Follow - up focus compensation, focus displacement control, to ensure the stability of continuous cutting.

智能控制系统 Smart Control System



- 基于Windows平台，界面清晰，简单易学；
 - 完整的切割工艺数据库，实时调整，提高切割质量；
 - 支持多种图形格式输入及国际G代码；
 - 自动排版功能，可自动共边、生成余料，通过多种阵列方式将板材布满；
 - 强大的编辑能力，缩放、平移、组合、割缝补偿、微连、桥接、飞行切割、断点记忆等多达 30 余种切割功能；
 - 多种自动寻边方式，定位精准，支持定高切割和板外跟随；
 - 支持无线手持盒，及以太网远程控制。
- Based on Windows platform, the interface is clear and easy to learn
 - Complete cutting process database, real-time adjustment, Improve cutting quality.
 - Support a variety of graphics format input and international G code.
 - Automatic typesetting function, can automatically co-edge, generate residual material, through a variety of arrays will be full of plates.
 - Powerful editing ability, zoom, translation, combination, slit compensation, micro connection, bridge, flight cutting, breakpoint memory and more than 30 cutting functions.
 - A variety of automatic edge finding methods, accurate positioning, support fixed height cutting and plate following.
 - Support wireless handheld box, and Ethernet remote control.



FULL SERVICE SOLUTIONS

全方位服务解决方案



无忧售后 Worry-free after-sales

前进中的国望集团，近30年的发展，在全国设有97个销售、售后服务网点，专业、高效的服务团队为您提供7*24小时.400全天候在线，24小时快速响应。国望激光的售后服务宗旨是“唯有信赖不可辜负！”以客户为中心，以诚相待，做您事业增值的伙伴！

With nearly 30 years of development, Has 97 sales and after-sales service outlets in the country. Professional and efficient service team will provide you with 7*24 hours.400 all-weather online, 24-hour rapid response. Guowang laser after-sales service tenet is “Trust is the only thing to live up to!” Customer - centered, honest, do your business value-added partners!



售前服务 Pre-sale service

咨询服务：国望激光为您提供官网、公众号、400热线、工程师上门等多渠道为您提供咨询解答。

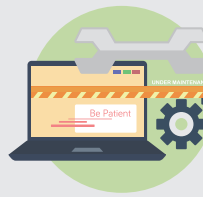
需求分析：结合您的产品、工艺及加工需求，推荐合理的机型，并提供方案书。

打样演示：国望激光现有3000多平方激光设备展厅，多种机型供您来公司考察打样，或图纸打样免费邮寄给您。

Consulting services: Guowang laser provides you with official website, WeChat Official Account, 400 hotline, engineer door-to-door service and other channels to provide you with consulting solutions.

Demand analysis: according to your product, process and processing requirements, recommend reasonable models, and provide scheme.

Proofing demonstration: guowang laser has more than 3000 square meters of laser equipment exhibition hall, a variety of models for you to visit the company to study our proofing, or drawings proofing free mail to you.



售中服务 Medium-Sales Service

前期勘测：结合您所订设备的机型，对计划摆放设备的场地、水、电、气要求做好规划，并提供设备的安装指导书。

安装培训：免费为您提供设备安装及员工操作培训服务，（激光原理、工艺应用、设备保养、安全知识、故障排查），提供员工再培训及技术输送服务。

Preliminary survey: Plan the site, water, electricity, and air supply requirements for the equipment based on the model of the equipment you ordered, and provide installation instructions for the equipment.

Installation training: free of charge to provide you with equipment installation and staff operation training services, (laser principle, process application, equipment maintenance, safety knowledge, troubleshooting), to provide staff retraining and technology delivery services.



售后服务 After-Sales Service

技术支持：专业的技术服务团队，免费提供远程故障解除指导，免费提供新的应用解决方案，提供硬件和软件的升级服务。

维保巡检：国望激光为我们用户的激光设备提供终身维修、保养，定期上门巡检。充足的备件支持，确保用户以最短时间恢复生产。

定期回访：国望激光售后服务中心，在每次服务结束5个工作日内回访客户，并按月度、季度、年度定期回访客户设备使用情况。您也可以通过服务热线反馈意见或建议。

Technical support: professional technical service team, free to provide remote troubleshooting guidance, free to provide new application solutions, hardware and software upgrade services.

Maintenance inspection: Guowang laser for our users of laser equipment to provide lifelong maintenance, maintenance, regular home inspection. Sufficient spare parts support to ensure that users can resume production in the shortest time.

Regular visit: Guowang laser after-sales service center will pay a visit to customers within 5 working days after each service, and pay a regular visit to customers on a monthly, quarterly and annual basis. You can also give feedback or suggestions through the service hotline.

FULFILL SOCIAL RESPONSIBILITY AND ACHIEVE SUSTAINABLE DEVELOPMENT

履行社会责任 实现可持续发展

响应国家碳达峰、碳中和目标，国望激光高度重视环境保护，以对环境负责任的态度进行设备的研发，优化机床结构，高度集成化控制系统，使国望激光的切割机比同类型设备能耗降低10~15%。随动抽尘系统确保机床工作区干净整洁延长机床使用寿命，同时保护员工健康和安全。

In response to the national carbon peak, carbon neutralization goals, Guo-wang laser attaches great importance to environmental protection, to the environment responsible attitude of equipment research and development, optimization of machine structure, highly integrated control system, so that the guo-Wang laser cutting machine than the same type of equipment energy consumption reduced by 10~15%. Follow - up dust extraction system to ensure a clean machine work area to extend the service life of the machine, while protecting the health and safety of employees.



以节能高效理念，开发和生产设备
With the concept of energy saving and high efficiency,
develop and produce equipment



尽可能的使用“低碳足迹”的材料
Use "low carbon footprint" materials whenever possible



使用可再生材料
Use of renewable materials



高精度电子比例阀，减少气体浪费
High precision electronic proportional valve to reduce gas waste



发起并参与各种可循环使用材料的回收活动
Initiate and participate in recycling activities of various recyclable materials



优化减速比，提高机床响应，减少能源消耗
Optimize the reduction ratio, improve the response
of the machine tool and reduce energy consumption



全包围设计，确保操作安全
Fully enclosed design ensures safe operation