



中國·國望集團
溫州國望機械有限公司
CHINA·GUOWANG GROUP
WENZHOU GUOWANG MACHINERY CO., LTD

浙江省平阳县万全轻工机械园区
Wanquan Light Industry Machinery Park,
Pingyang Country, Zhejiang Province
T +86-577-58111111 F +86-577-58111077
E master@guowang.com

WWW.GUOWANG.COM

SHANGHAI EUREKA
MACHINERY IMP.& EXP.CO.,LTD

Room 17011727 Fourune Times Manison No.1438
Shanxi Rd(n) Shanghai P.r.china
T +86-21-62998061 62986517 62999507 F +86-21-62985160
E Info@eureka-machinery.com

WWW.EUREKA-MACHINERY.COM



Version 2024.05

INTELLIGENT PAPER SHEETER

智能卷筒分切机

KEEP IMPROVING TO WIN MORE EXPECTATION

不斷超越，才能贏得更多期待

中國·國望集團始創于1993年，是一家集研發、設計、生產、銷售、服務為一體的中國印後設備專業製造商。經30多年發展積累，現有占地面積近12萬平方，建築面積超20萬平方的現代化標準工廠。并在全球設有銷售、售後服務網點。準時為客戶提供優質快捷的售前售後服務。

不斷超越，才能贏得更多期待。公司按照國際企業的標準及架構，執行7S現場管理模式。公司引進50多臺國際大型加工中心，有日本三菱、東芝、馬扎克、大隈、瑞士斯達拉格、意大利帕瑪、曼德利等高精度加工設備，同時引進瑞士海克斯康三坐標檢測儀，祇因對產品精度和品質的執着追求，強大的加工集群是您設備品質的堅定保證。

國望集團通過ISO9001質量管理體系認證，主要產品均已通過歐盟CE以及德國TUV認證，匯集全球優勢資源，融合國際前沿技術，精益求精全力打造新一代印後設備，以智能化、高精度、高效率、高品質的要求，重新定義印後裝備價值，賦予用戶強大的市場競爭力，為客戶創造最大利益。

The Guowang Group, founded in 1993, is a professional manufacturer of post-press equipment in China that integrates research and development, design, production, sales, and services. After more than 30 years of development, it now has a modern standard factory with an area of nearly 120,000 square meters and a construction area of over 200,000 square meters. And has sales and after-sales service outlets worldwide, providing customers with high-quality and efficient pre-sales and after-sales services on time.

Only by constantly surpassing to win more expectations. The company implements the 7S on-site management mode according to the standards and framework of top international companies. It has introduced more than 50 international advanced large-scale machining centers, including high-precision machining equipment such as Mitsubishi, Toshiba, Mazak, Okuma, Staubli, PAMA, and Mandelli from Japan, Switzerland, and Italy. At the same time, the company has introduced the Swiss Hexagon three-coordinate measuring instrument. With its persistent pursuit of product precision and quality, the strong machining cluster is a firm guarantee for your equipment quality.

The Guowang Group has obtained ISO9001 quality management system certification, and its main products have passed the EU CE and German TUV certification. The company gathers global advantageous resources, integrates international cutting-edge technology, and strives to create a new generation of post-press equipment with intelligent, high-precision, high-efficiency, and high-quality requirements. It redefines the value of post-press equipment and gives users strong market competitiveness, creating maximum benefits for customers.



D 110 / D 150 / D 170 / D 190

03-04P

Intelligent Double Rotary Sheeter
智能雙螺旋分切機(匠心版)

D 110R

09-10P

Intelligent Double Rotary Sheeter (with Mark-register)
智能雙螺旋分切機(光標定位)

D 110C / D 150C / D 170C / D 190C

05-06P

Intelligent Double Rotary Sheeter (With Auto Logistics System)
智能雙螺旋分切機(自動物流)

E 150 / E 170 / E 190

13-14P

HighPrecision (Double Rotary) Sheeter with Servo Driven
智能雙螺旋分切機(標準版)

D 110 / D 150 / D 170 / D 190

07-08P

Intelligent Double Rotary Sheeter With Ink-jet (option)
智能雙螺旋分切機(噴碼)

S 140 / S 170 / S 190

17-18P

High Precision Sheeter With Servo Driven
伺服電腦高精密卷筒紙分切機

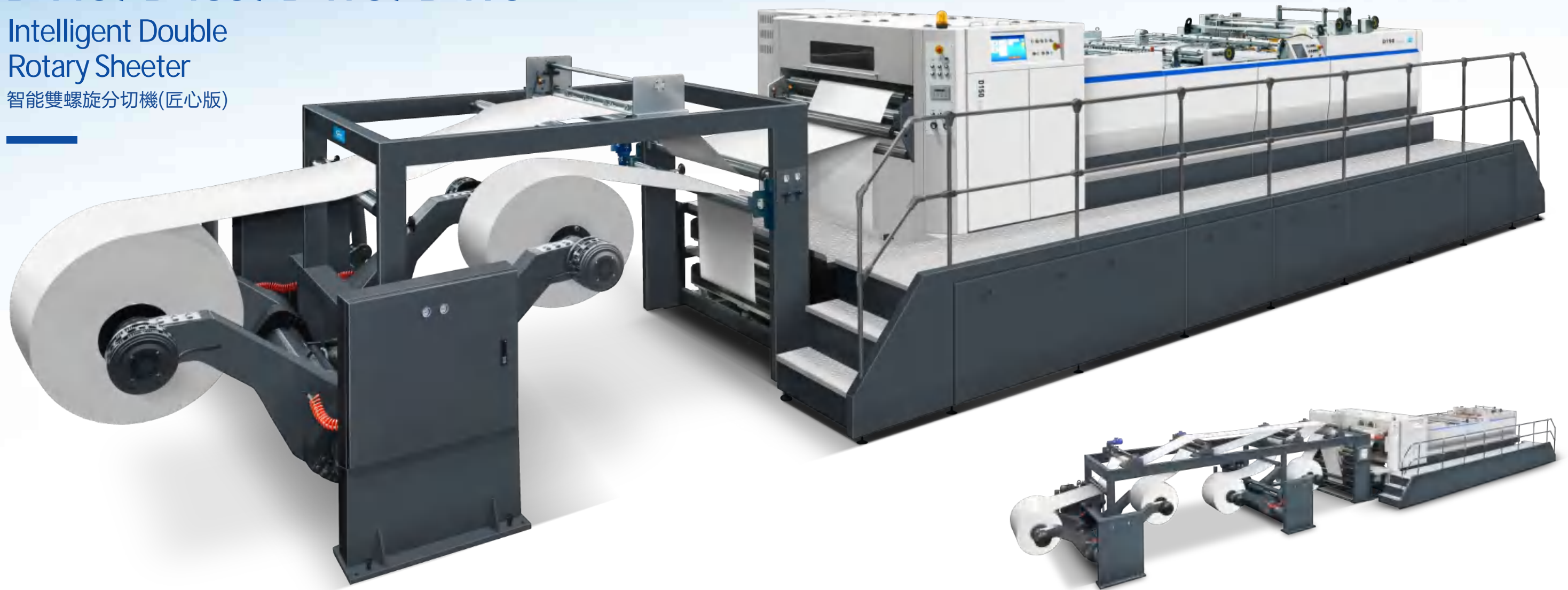


PURSUIING GERMAN AND JAPANESE QUALITY
TO SHAPE A NATIONAL BRAND.
追求德日品質 塑造民族品牌

D 110 / D 150 / D 170 / D 190

Intelligent Double Rotary Sheeter

智能雙螺旋分切機(匠心版)



智能雙螺旋分切機採用德國技術并結合多年生產切紙機的經驗，研發出來的高精度、高效率、高穩定的新產品。本產品廣泛應用於卡紙、銅版紙、牛皮紙、文化紙、雙膠紙、高光相紙、金銀卡紙、鋁箔紙、激光鐳射紙、烟酒包裝紙等。配有高質量雙回旋刀頭；無間隙齒輪，高速平衡刀座。有效保障刀頭在高速進行時的平穩性。同時配有高清直視雙屏同步系統，LCD 觸摸屏實現人、機、高效自動，讓操作人員更加得心應手。

經過對市場同類產品的分析以及思考，我們做出了與眾不同的決定：讓分切機高貴的氣質貫穿整個產品的設計、加工、生產、裝配。整體加高機身、無間隙齒輪、英國進口大功率伺服、大功率儲能櫃、自動分刀定位系統、自動反曲系統、自動排廢系統、開降式壓紙機構等，數不勝數的特點供您一一品鑒。

The intelligent double rotary sheeter adopts German technology and combines many years of experience in producing paper cutters to develop new products with high precision, high efficiency and high stability. This product is widely used in cardboard, art paper, kraft paper, cultural paper, double coated paper, high-gloss photo paper, gold and silver cardboard, aluminum foil paper, laser paper, tobacco and alcohol packaging paper, etc. Based on the target of improving the production efficiency for customers and optimizing the accuracy of products, it is equipped with high-quality cutting roller by avant-garde design and new technology, backlash-free gears, high-speed dynamic-balanced knife holders, British imported high-power servo system with energy storage cabinet and improved lubrication system to get more stable long-term precise cutting at high speed with lower noise; the high-definition LED touch screen with graphic direct-view interface design, dual-screen synchronization system for more convenient and comfortable operation; overall heightened body for more piling by each delivery. Compared to the other products in the market, we bring the sheeter noble and unique features for high-grade clients not only through the configurations as above introduced, but also by entirely high-level design, processing, production and assembly. Moreover, there are richer settings to select: auto slitters positioning by servo system, auto waste ejection device, auto de-curler, up-down type paper pressing mechanism, etc.



高精度
HIGH-PRECISION



薄厚紙兼容
WORKABLE FOR THIN / THICK PAPER



1700
收紙台高度
DELIVERY HEIGHT

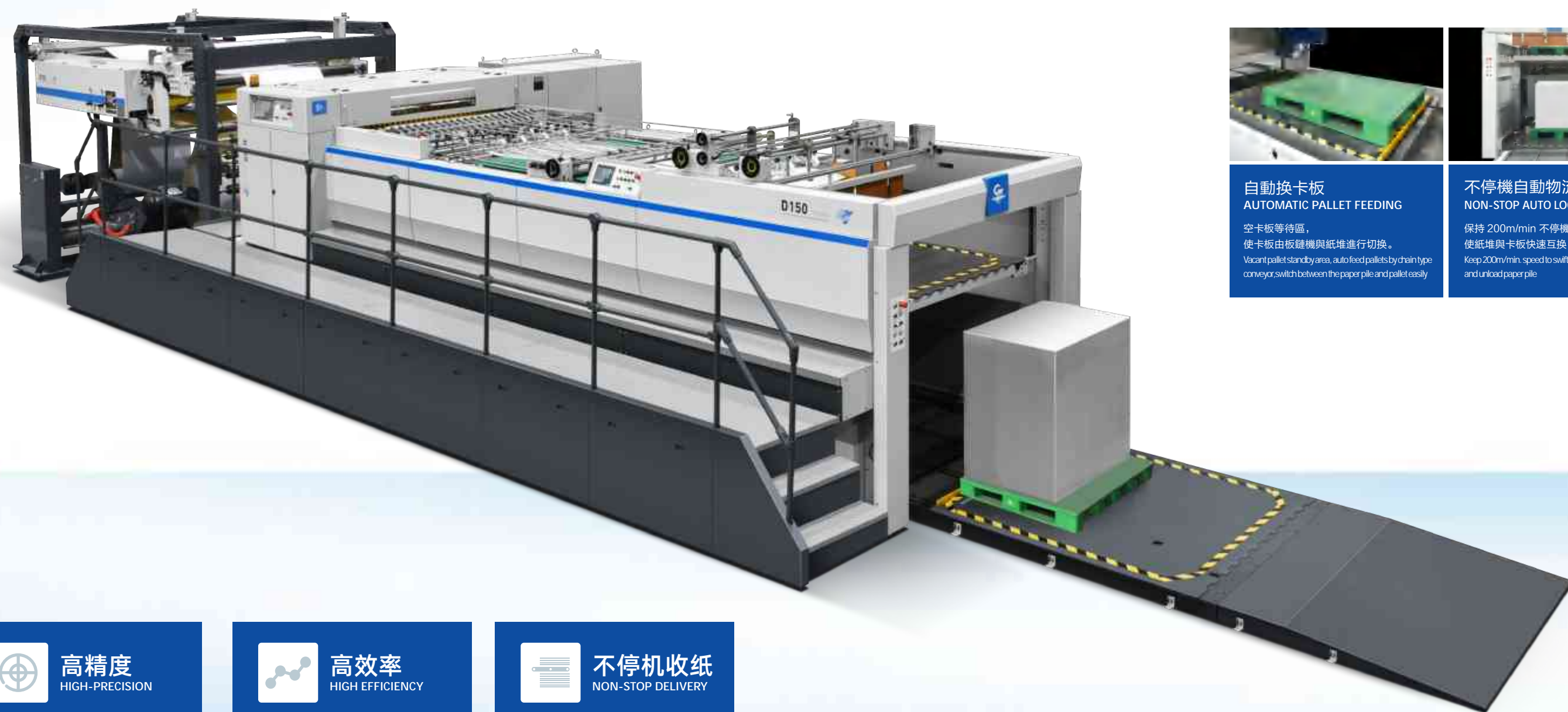
D 110C / D 150C / D 170C / D 190C

Intelligent Double Rotary Sheeter (With Auto Logistics System)

智能雙螺旋分切機(自動物流)

智能雙螺旋分切機採用德國技術并結合多年生產切紙機的經驗，研發出來的高精度、高效率、高穩定的新產品。本產品廣泛應用於卡紙、銅版紙、牛皮紙、文化紙、雙膠紙、高光相紙、金銀卡紙、鋁箔紙、激光鐳射紙、煙酒包裝紙等。“她”配有高質量雙回旋刀頭；無間隙齒輪，高速平衡刀座。同時配有高清直視雙屏同步系統，LCD 觸摸屏實現人、機、高效自動，讓操作人員更加得心應手。配有的全自動不停機放卷接紙機，不停機不降速收紙臺，自動物流系統，操作方便，提高效率。

The intelligent double rotary sheeter adopts German technology and combines many years of experience in producing paper cutters to develop new products with high precision, high efficiency and high stability. This product is widely used in cardboard, art paper, kraft paper, cultural paper, double set paper, high-gloss photo paper, gold and silver cardboard, aluminum foil paper, laser paper, tobacco and alcohol packaging paper, etc. It is equipped with high-quality cutting roller, backlash-free gears, high-speed dynamic balanced knife holders, British imported high-power servo system with energy storage cabinet and improved lubrication system, as well as high-definition LED touch screen with graphic direct-view interface design, dual-screen synchronization system for more convenient and comfortable operation etc. The automatic non-stop splicer for unwinding, non-stop and non-deceleration delivery, automatic logistics system as pictures displayed are available for D-C Series to achieve higher efficiency, highly recommended to paper mill and converting industry.



自動換卡板 AUTOMATIC PALLET FEEDING

空卡板等待區，使卡板由板鏈機與紙堆進行切換。
Vacant pallet standby area, auto feed pallets by chain type conveyor, switch between the paper pile and pallet easily



不停機自動物流系統 NON-STOP AUTO LOGISTICS SYSTEM

保持 200m/min 不停機不降速，使紙堆與卡板快速互換。
Keep 200m/min. speed to swiftly change pallets and unload paper pile



高精度
HIGH-PRECISION



高效率
HIGH EFFICIENCY



不停機收紙
NON-STOP DELIVERY

D 110 / D 150 / D 170 / D 190

Intelligent Double Rotary Sheeter With Ink-jet (option)

智能雙螺旋分切機(噴碼)



噴碼平臺 INK-JET PLATFORM

高強度加厚牆板、過紙棍水平可調、二次糾偏。
Heavy duty thickened frame, transfer roller horizontal adjustable, twice web guide.



智能雙螺旋分切機採用德國技術結合多年生產經驗，研發出來的精確、高效率、高穩定性的新產品。本產品廣泛應用於卡紙上噴二維碼、條碼、平紋紙、高光紙、金銀卡紙、銅箔紙、激光紙、紙基包裝紙等。每一個新技術都是以提高客戶的生產效率及最大化產品精度為使用，針對64英寸以上的紙張，配有高強度雙刀架：無間隙齒輪、高速平刀架、配帶穩定獨立反饋、精確紙張變化自動調整反饋度、配有的高速直視觸摸屏系統、LCD觸摸屏實時人、機、電效互動，讓操作人員更加得心應手。

同時經過對市場同類產品的分析以及思考，我們做出了與眾不同的決定：讓分切機擁有最優質的整體產品設計、加工、生產、裝配、精確加寬機身、無間隙齒輪、英國進口大功率伺服、大功率齒輪箱、自動分刀定位系統、自動反饋系統、自動調整系統、開關式壓紙機構等，都不錯的特點供選——品質。

This intelligent double rotary sheeter combines advanced technology and rich experience, is developed specially for ink-jet of bar-code, QR-code, administration code etc. on various package and material, and is widely used in cardboard, kraft paper, high-gloss photo paper, gold and silver card board, aluminum foil paper, laser paper, tobacco and alcohol packaging paper, etc. To improve the production efficiency and optimizing the accuracy of cutting paper over 64gsm, it is equipped with high-quality cutting roller by avant-garde design and new technology, backlash-free gears, high-speed dynamic-balanced knifeholders, 4 groups of independent de-curler to automatically adjust de-curling degree according to the paper roll status, British imported high-power servo system with energy storage cabinet and improved lubrication system to get more stable long-term precise cutting at high speed with lower noise; the high-definition LED touch screen with graphic direct-view interface design, dual-screen synchronization system for more convenient and comfortable operation; overall heightened body for more piling by each delivery. Compared to the other products in the market, we bring the sheeter noble and unique features for high-grade clients not only through the configurations as above introduced, but also by entirely high-level design, processing, production and assembly. Moreover, there are richer settings to select: auto slitters positioning by servo system, auto waste ejection device, up-down type paper pressing mechanism, etc.



高精度
HIGH-PRECISION



高效率
HIGH EFFICIENCY

D 110R

Intelligent Double Rotary Sheeter (with Mark-register)

智能雙螺旋分切機(光標定位)



双纠偏
DUAL WEB GUIDE



预牵引
PRE-TRACT



剥离机构
DE-LAMINATING DEVICE



对标对线分切
CUT TO REGISTER

智能雙螺旋分切機（光標定位）採用德國技術并結合多年生產切紙機的經驗，研發出來的高精度、高效率、高穩定的新產品。本產品廣泛應用於煙標對標對綫，酒包對標對綫及酒包鐳射紙、金銀卡紙、鋁箔紙、煙酒包裝紙等。配有雙糾偏、預牽引、剝率機構、對標對綫分切，高質量雙回旋刀頭；無間隙齒輪，高速平衡刀座。有效保障刀頭在高速進行時的平穩性。同時配有高清直視雙屏同步系統，LCD 觸摸屏實現人、機、高效自動，讓操作人員更加得心應手。經過對市場同類產品的分析以及思考，我們做出了與眾不同的決定：讓分切機高貴的氣質貫穿整個產品的設計、加工、生產、裝配。整體加高機身、無間隙齒輪、英國進口大功率伺服、大功率儲能櫃、自動分刀定位系統、自動反曲系統、自動排廢系統、開降式壓紙機構等，數不勝數的特點供您——品鑒。

This intelligent double rotary sheeter combines advanced technology and rich experience, is developed specially for ink-jet of bar-code, QR-code, administration code etc. on various package and material, and is widely used in cardboard, kraftpaper, high-gloss photo paper, gold and silver cardboard, aluminum foil paper, laserpaper, tobacco and alcohol packaging paper, etc. To improve the production efficiency and optimizing the accuracy of cutting paper over 64gsm, it is equipped with high-quality cutting roller by avant-garde design and new technology, backlash-free gears, high-speed dynamic-balanced knifeholders, 4 groups of independent de-curler to automatically adjust de-curling degree according to the paper roll status, British imported high-power servo system with energy storage cabinet and improved lubrication system to get more stable long-term precise cutting at high speed with lower noise; the high-definition LED touch screen with graphic direct-view interface design, dual-screen synchronization system for more convenient and comfortable operation; overall heightened body for more piling by each delivery. Compared to the other products in the market, we bring the sheeter noble and unique features for high-grade clients not only through the configurations as above introduced, but also by entirely high-level design, processing, production and assembly. Moreover, there are richer settings to select: auto slitters positioning by servo system, auto waste ejection device, up-down type paper pressing mechanism, etc..

電控部分

ELECTRIC CONTROL PART

采用19寸工業電腦，英國CT高端大功率伺服系統，配置自主知識產權的軟件控制系統。畫面和諧，顯示內容豐富，操作性強。高效的大功率伺服配合儲能器，有效的節省了電能，提高了經濟性真正做到了綠色節能。

Using 19-inch industrial computer, British CT high-end high-power servo system, equipped with a software control system with independent intellectual property rights, the picture is harmonious, the display content is rich, and the operability is strong. High-efficiency high-power servo, combined with energy storage, effectively saves electric energy, improves economy, and truly achieves green and energy-saving.



主機機身

MAIN BODY

主機機身整體采用鑄件結構，使用上好的球墨鑄鐵鑄造而成，精度等級要求高，確保機身穩定性，整機運行更加穩定，可靠。

The main body of the main body adopts a casting structure and is made of high-quality nodular cast iron. The accuracy level is required to ensure the stability of the body, and the whole machine runs more stable and reliable.

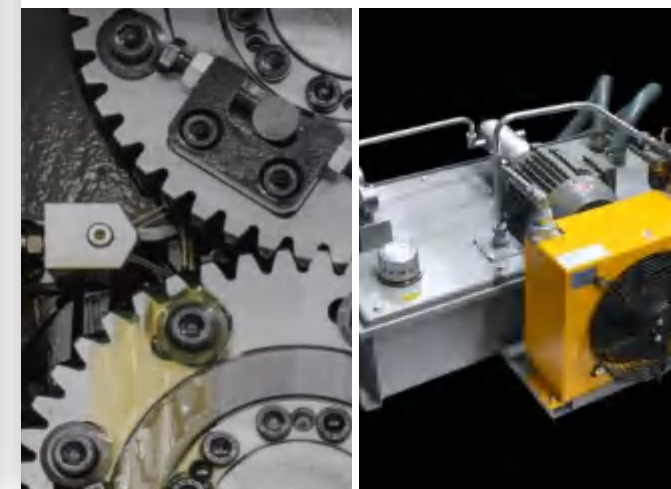


油料潤滑系統

OIL LUBRICATION SYSTEM

噴淋式齒輪潤滑系統，保障齒輪在整個運行過程中的充分潤滑。有效延長了機器的使用壽命。

The spray gear lubrication system ensures the gears are fully lubricated during the entire operation. Effectively prolong the service life of the machine.



縱切部分(選配)

SLITTING PART (OPTIONAL)

伺服控制高精度中分刀與修邊刀，實現了全自動定位，方便調整，提高效率。二段式自動氣壓下刀及靠刀動作，精確調整刀片的切入深度，剪切式的分切結構，減小紙粉的同時，切面更加光滑。

Servo control high-precision center splitting knife and trimming knife, realize automatic positioning, convenient adjustment, and improve efficiency. Two-stage automatic air pressure lowering and relying on the knife action to accurately adjust the cutting depth of the blade. The cutting structure of cutting reduces the paper powder while making the cut surface smoother.



一鍵定位(選配)

AUTO POSITIONING (OPTIONAL)

通過電腦輸入紙張參數，可實現一鍵快速調機 (50mm/S)

- 1、原紙架
- 2、糾偏傳感器
- 3、中分、修邊刀
- 4、減速壓紙皮帶
- 5、拍紙板、中分板、檔紙板

Automatic swift adjustment (50mm/s) by inputting paper parameters in touch screen

1. Paper unwinder
2. Web guide sensor
3. Slitters
4. Decelerating pressing belt
5. Logging plates, separating plates, base plates



雙回旋螺旋刀組

DOUBLE ROTARY KNIFE SET

配置大功率高響應英國CT伺服，保障裁切的精度及效率。引進臺灣刀頭技術，無間隙齒輪結構設計，有效消除2把刀的晃動間隙，保障刀片的壽命及裁切精度。箱體采用球墨鑄鐵，時效處理後，經5軸高精度加工中心一次性加工完成，保證產品的精度及一致性。刀座采用整體式鑄件結構，有效保障刀體在高速運行時的平穩性。

Equipped with high-power and high-response British CT servo to ensure cutting accuracy and efficiency. The introduction of Taiwan's advanced cutter head technology and a gap-free gear structure design can effectively eliminate the shaking gap of the two knives, ensuring the life of the blade and cutting accuracy. The box body is made of nodular cast iron. After aging treatment, it is processed by a 5-axis high-precision machining center at one time to ensure the accuracy and consistency of the product. The tool holder adopts an integral casting structure, which effectively guarantees the stability of the tool body during high-speed operation.



自動反曲控制系統

REVERSE BENDING SYSTEM

自動反曲控制系統，會根據紙卷的變化自動調整反曲度，使紙張更加平整，裁切更加順滑。

The automatic recurve control system will automatically adjust the degree of recursion according to the change of the paper roll, so that the paper is flatter and the cutting is smoother.



E 150 / E 170 / E 190

High Precision (Double Rotary) Sheeter with Servo Driven

智能雙螺旋分切機(標準版)



智能雙螺旋分切機採用德國技術并結合多年生產切紙機的經驗，研發出來的高精度、高效率、高穩定的新產品。本產品廣泛應用於卡紙、銅版紙、牛皮紙、文化紙、雙膠紙、高光相紙、金銀卡紙、鋁箔紙、激光鐳射紙、烟酒包裝紙等。配有高質量雙回旋刀頭；無間隙齒輪，高速平衡刀座。有效保障刀頭在高速進行時的平穩性。同時配有高清直視雙屏同步系統，LCD 觸摸屏實現人、機、高效自動，讓操作人員更加得心應手。

經過對市場同類產品的分析以及思考，我們做出了與眾不同的決定：讓分切機高貴的氣質貫穿整個產品的設計、加工、生產、裝配。整體加高機身、無間隙齒輪、進口大功率伺服、大功率儲能櫃、氣動中分刀系統、電動反曲系統、自動排廢系統、開降式壓紙機構等，數不勝數的特點供您一一品鑒。

The intelligent double rotary sheeter adopts German technology and combines many years of experience in producing paper cutters to develop new products with high precision, high efficiency and high stability. This product is widely used in cardboard, art paper, kraft paper, cultural paper, double coated paper, high-gloss photo paper, gold and silver cardboard, aluminum foil paper, laser paper, tobacco and alcohol packaging paper, etc. Based on the target of improving the production efficiency for customers and optimizing the accuracy of products, it is equipped with high-quality cutting roller by avant-garde design and new technology, backlash-free gears, high-speed dynamic-balanced knife holders, imported high-power servo system with energy storage cabinet and improved lubrication system to get more stable long-term precise cutting at high speed with lower noise; the high-definition LED touch screen with graphic direct-view interface design, dual-screen synchronization system for more convenient and comfortable operation; overall heightened body for more piling by each delivery. Compared to the other products in the market, we bring the sheeter noble and unique features for high-grade clients not only through the configurations as above introduced, but also by entirely high-level design, processing, production and assembly. Moreover, there are richer settings to select: pneumatic slitters system, auto waste ejection device, motorized de-curler, up-down type paper pressing mechanism, etc.



降本增效
HIGH COST-EFFICIENCY



实用价值
PRACTICAL VALUE



聚焦需求
FOCUS ON DEMANDS

電控部分

ELECTRIC CONTROL PART

採用大尺寸工業電腦，INVT 大功率伺服系統，配置自主知識產權的軟件控制系統。畫面和諧，顯示內容豐富，操作性強。高效的大功率伺服配合儲能器，有效的節省了電能，提高了經濟性真正做到了綠色節能。

Using large-size industrial computer, INVT high-power servo system, equipped with a software control system with independent intellectual property rights, the picture is harmonious, the display content is rich, and the operability is strong. High-efficiency high-power servo, combined with energy storage, effectively saves electric energy, improves economy, and truly achieves green and energy-saving.



膠軸反曲

RUBBER ROLLER DE-CURLER (OPTIONAL)

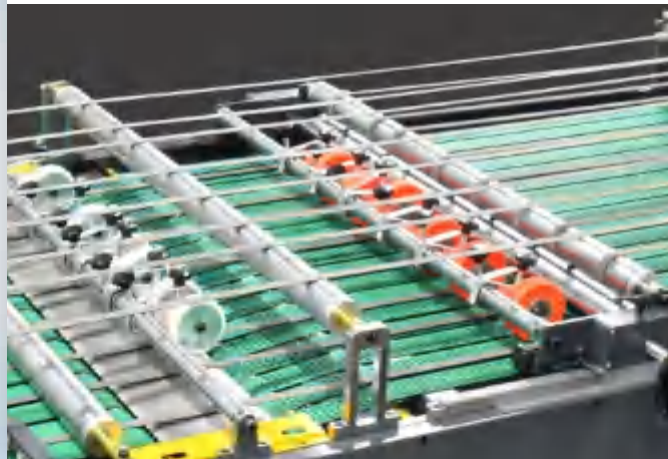
使高克重及超高鬆紙張裁切平整，反曲效果更佳。
Make high grammage and thick paper flat, improve the de-curling efficiency.



真空吸紙尾

VACUUM SUCTION ON PAPER EDGE (OPTIONAL)

可不使用壓紙輪減速，完全杜絕二次光斑出現。
Completely avoid light spots by using the vacuum suction instead of pressing wheels at low speed.



主機機身

MAIN BODY

主機機身整體採用鑄件結構，使用中碳鋼，調質處理，精度等級要求高，確保機身穩定性，整機運行更加穩定，可靠。

The main body of the main body adopts a casting structure and is made of high-quality nodular cast iron. The accuracy level is required to ensure the stability of the body, and the whole machine runs more stable and reliable.

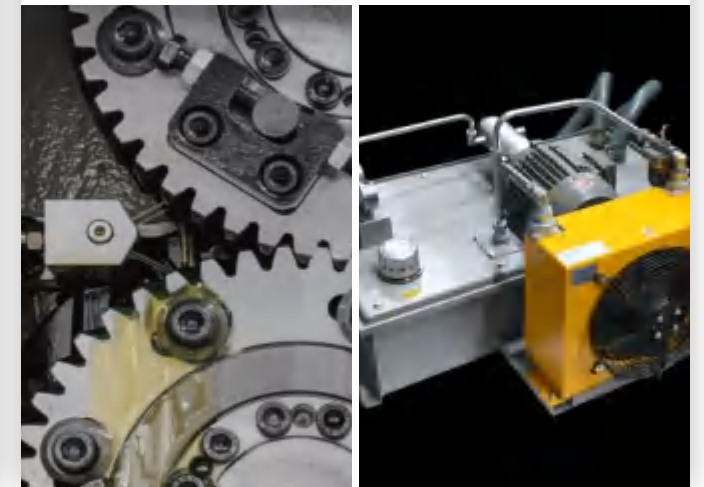


油料潤滑系統

OIL LUBRICATION SYSTEM

噴淋式齒輪潤滑系統，保障齒輪在整個運行過程中的充分潤滑。有效延長了機器的使用壽命。

The spray gear lubrication system ensures the gears are fully lubricated during the entire operation. Effectively prolong the service life of the machine.

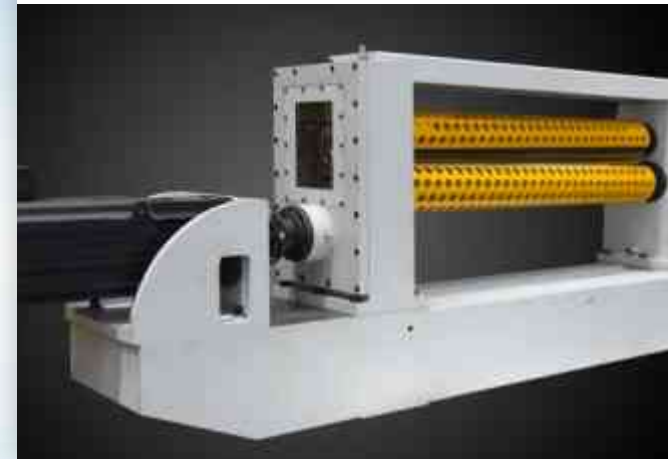


雙回旋螺旋刀組

DOUBLE ROTARY KNIFE SET

配置大功率高響應英國CT伺服，保障裁切的精度及效率。引進臺灣刀頭技術，無間隙齒輪結構設計，有效消除2把刀的晃動間隙，保障刀片的壽命及裁切精度。箱體採用球墨鑄鐵，時效處理後，經5軸高精度加工中心一次性加工完成，保證產品的精度及一致性。刀座採用整體式鑄件結構，有效保障刀體在高速運行時的平穩性。

Equipped with high-power and high-response British CT servo to ensure cutting accuracy and efficiency. The introduction of Taiwan's advanced cutter head technology and a gap-free gear structure design can effectively eliminate the shaking gap of the two knives, ensuring the life of the blade and cutting accuracy. The box body is made of nodular cast iron. After aging treatment, it is processed by a 5-axis high-precision machining center at one time to ensure the accuracy and consistency of the product. The tool holder adopts an integral casting structure, which effectively guarantees the stability of the tool body during high-speed operation.



氣動中分

PNEUMATIC SLITTING PART (OPTIONAL)

調節簡便，定位準確，氣動鎖緊。
Convenient adjustment, accurate positioning, lock tightly by pneumatic device.



S 140 / S 170 / S 190

High Precision Sheeter
With Servo Driven(Six-reel)

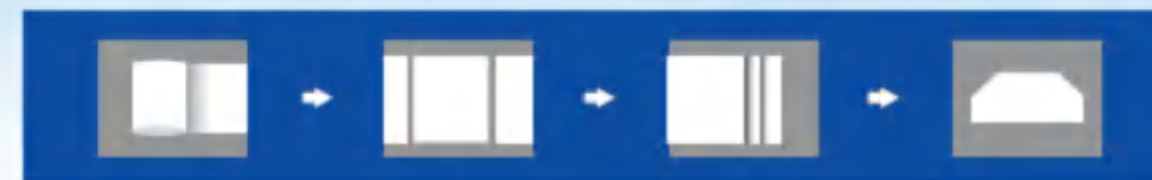
伺服電腦高精密卷筒紙分切機（六卷）



S 140 / S 170 / S 190

High Precision Sheeter
With Servo Driven(Two-reel)

伺服電腦高精密卷筒紙分切機（雙卷）



S140/S170/S190 伺服電腦高精密卷筒紙分切機採用英國的技術。本機電腦控制系統採用伺服系統，並結合多位高級工程師研究生產切紙機的多年豐富經驗及生產工藝，研製出新一代高精度、節能、高效的產品。該產品廣泛應用於切卡紙、銅版紙、文化紙、牛皮紙、雙膠紙、高光相紙、金銀卡紙、鋁箔紙、烟酒包裝紙等產品。是造紙行業及印刷包裝產業中普遍採用的紙品裁切機。

S140/S170/S190 Servo driven precision sheeter apply advanced technology from England and servo system for control. With rich experience and leading manufacturing technique of senior engineers, it is a new generation machine of high accuracy and efficiency which is widely used in paper mill, printing and packaging industry for cutting cardboard, coated paper, kraft paper, photo paper, aluminum foil paper, packing paper etc.

無軸式原紙架 及PLC張力控制系統

採用多點式張力控制系統，電腦測算自動反饋給PLC控制系統。通過比例閥實現剎車負荷之增減張力，達到自動控制紙張的張力，并可通過人機界面進行微調操作。

It adopts a multi-point tension control system, and automatically feeds back to the PLC control system through an infrared distance measuring electric eye. The tension of the brake load is increased or decreased through the proportional valve, which can automatically control the tension of the paper, and can be fine-tuned through the man-machine interface.

SHAFTLESS BASE PAPER HOLDER AND PLC TENSION CONTROL SYSTEM



電器部分

ELECTRICAL SYSTEM

採用西門子PLC與英威騰伺服系統，實現精確定位及裁切。西門子觸摸屏及改進的操作界面，更好的符合人體工程學。

Using Siemens PLC and INVT servo system to achieve precise positioning and cutting. Siemens touch screen and improved operation interface make it more ergonomic.



三組分條刀 可供修邊及對剖

THREE-COMPONENT STRIP KNIFE FOR TRIMMING AND CUTTING

剪切式分條刀組具有靠刀二段式動作，精確調整上下刀片重疊深度，可因不同入料方向來調整刀片角度及免用工具快速固定刀組等特點。剪切式分切方式具有分切時粉末少，切面光滑及高速分切等特點。高剛性刀架更可適用於300m/min高速分條環境，提高生產效益并確保材料品質穩定性。

Shearing slitting knife set has the action of relying on the knife, which can accurately adjust the overlap depth of the upper and lower blades, adjust the blade Angle according to different feeding directions and fix the knife set without using tools. The cutting method has the characteristics of less powder, smooth cutting surface and high speed cutting. High rigidity tool rest is suitable for 300m/min high-speed slitting environment, improve production efficiency and ensure the stability of material quality.



切刀部分

CUTTING KNIFE UNIT

1. 上刀輥：採用英國切刀方法，以有效降低切紙時的荷重及噪音，延長切刀壽命上刀輥體以精鋼焊接後作精密加工，并經動態平衡調整，有效降低高速運轉時之震動及噪音。
2. 下刀座：下刀座採用鑄鐵一體成形鑄造，再經精密加工，穩定性佳。
3. 主動輥：輥面有擴張紋路設計，并以氣缸控制輥體之加壓夾紙。
4. 回切刀：以特殊合金鋼精密加工制成，壽命特長，刀刃容易調較。
5. 安全罩：安全罩掀開即自動停機，安全有保障。

1. Upper knife roller: The British cutter method is adopted to effectively reduce the load and noise during paper cutting, and to extend the life of the cutter. The upper knife roller body is welded with stainless steel for precision machining, and is dynamically balanced to effectively reduce high-speed operation. Time vibration and noise.
2. Lower tool holder: The lower tool holder is made of cast iron integrally formed and cast, and then precision processed, with good stability.
3. Active roller: The roller surface is designed with expansion lines, and the cylinder is used to control the pressure and paper clamping of the roller body.
4. Back-cutting knife: It is made of special alloy steel precision machining, with long service life and easy adjustment of the blade.
5. Safety cover: It will automatically shut down when the safety cover is opened, ensuring safety.



重疊部分

OVERLAPPING UNIT

無極變頻調速控制的快/慢速帶，會自動跟踪刀速，自動調整速帶，使紙張能完美實現重疊。

The fast/slow speed belt controlled by variable frequency speed control can automatically track the knife speed, automatically adjust the speed belt, so that the paper can achieve perfect overlap.



收紙部

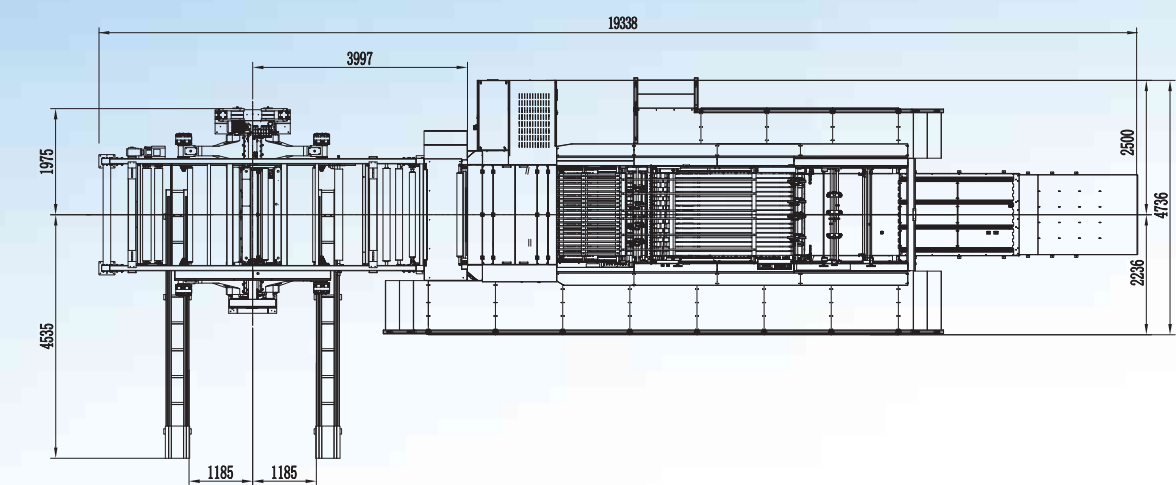
DELIVERY UNIT

自動升降系統以及三面互調的收紙部位，加上無極震蕩齊紙機構，保障紙張收的整齊又順暢。

Automatic lifting system and three sides of the intermodulation of the delivery unit, coupled with the non-polar vibration of the flat paper mechanism, to ensure that the paper delivery smooth.



D 系列地基安裝圖
D SERIES INSTALLATION FLOOR PLAN

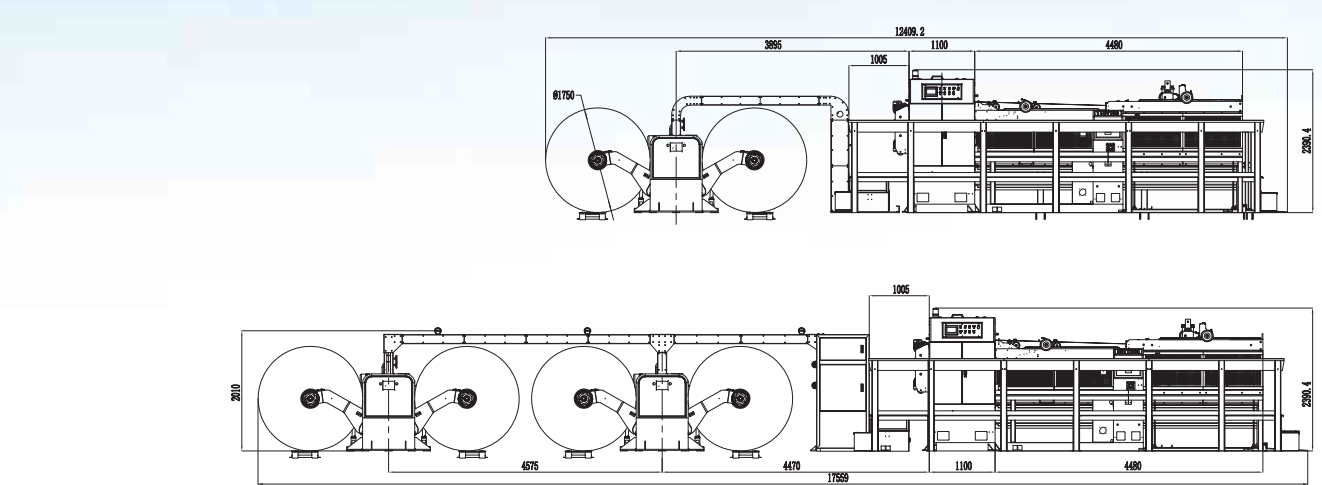


| D系列標配 | D SERIES STANDARD CONFIGURATION |
|-------------|--|
| 液壓放紙架 | Shaftless pivoting arm unwind stand |
| 風冷氣刹 | Air cooling pneumatic disc brake |
| 自動張力 | Auto tension control |
| 電動反曲 | Motorized de-curler |
| 自動糾偏 | EPC web guiding |
| 雙螺旋橫切刀 | Double rotary knife cylinders |
| 三组分切刀 | Three sets of Pneumatic Slitters |
| 除靜電 | Static Eliminator Device |
| 過紙部 | Out-feed and overlapping section |
| 1700mm 高收紙部 | Delivery unit for 1700mm piling height |
| 計數與插標 | Auto counting and tape inserter |
| 雙觸摸屏 | Dual touch screen |
| 進口伺服系統等 | JUN PLC, UK CT Servo Driver, Schneider inverter, imported electrical components etc. |
| 主機一體化鑄件 | Main body integrated cast iron |

| S系列標配 | S SERIES STANDARD CONFIGURATION |
|--------|---|
| 液壓放紙架 | Shaftless pivoting arm unwind stand |
| 單螺旋橫切刀 | High precision single rotary sheet cutter |
| 自動對角 | Squareness Adjustment System |
| 除靜電 | Static Eliminator Device |
| 過紙部 | Paper Conveyer System |
| 計數與插標 | Auto counting and Label inserter |
| 收紙與閘紙 | Delivery and Auto logger System |
| 電動反曲 | Motorized de-curler |
| 自動張力 | Auto-tension control |
| 主機鋼構件 | Main body steel structure |

| 選配 | OPTIONS |
|-------------------------|--|
| 伺服系統自動調節縱切位置 (僅用于 D 系列) | Servo system for automatic slitter adjustment (Only for D series) |
| 膠軸反曲 (僅用于 D/E 系列) | Rubber roller de-curler (Only for D/E series) |
| 真空吸紙尾 | Vacuum suction on paper edge |
| 意大利 RE 氣刹自動張力控制 | Italy RE pneumatic brake for auto tension control |
| 光標追蹤對標對綫分切 | Cut-to-register |
| 定制機械夾頭,或通用尺寸錐形夾頭 | Customized mechanical chuck or universal conical chuck |
| 不停機接紙 | Non-stop automatic paper splicer |
| 不停機收紙 | Non-stop delivery |
| 自動換卡板 | Automatic pallet feeding |
| 分切及修邊吸廢 (僅用于 S 系列) | Middle slitting and waste edge collecting system (Only for S series) |
| 自動糾偏 (僅用于 S 系列) | Auto-EPC (Edge paper control) (Only for S series) |
| 不停機自動物流系統 | Non-stop automatic logistics system |
| 噴碼裝置 | Ink-jet device |
| 加大型油壓紙架 | Enlarged hydraulic cylinder for paper unwinder |
| 分切刀吸塵 | Dust suction for slitter |
| 修邊吸紙加碎紙機 | Shredder blower for trimming waste |
| 走紙吸塵裝置 | Dust removal after cutting |
| 輔助收紙吹風與皮帶 (適合薄紙) | Blower and belts to assist delivery of thin paper |
| 分切長度 2m | Cutting length to 2m |
| 搖擺輥針對變形紙卷 | Swing cylinder for out of round paper roll |
| 雙回路冗餘控制安全繼電器 | Safety relay for 2-channel redundant control |
| 更多特殊定制供選擇…… | More options to select according to definite demands... |

S 140 / S 170 / S 190 地基安裝圖
S 140 / S 170 / S 190 INSTALLATION FLOOR PLAN



| 機器參數 | SPECIFICATIONS | | | | | |
|---------|----------------------------------|-------|---------------------------------|---------------------------------|---------------------------------|--|
| 型号 | Model | | D110/D150/D170/D190 | D110R | E150 / E170 / E190 | S140/S170/S190 |
| 切纸型式 | Cutting type | | 双刀圆盘式 Twin knife synchro-fly | 双刀圆盘式 Twin knife synchro-fly | 双刀圆盘式 Twin knife synchro-fly | 上刀圆切, 下刀固定 Top rotary knife, bottom fixed knife |
| 纸张范围 | Paper weight range | gsm | 150-1000 | 150-1000 | 150-1000 | 60-550 |
| 最大纸张幅面 | Maximum paper format | mm | 1100/1500/1700/1900 | 1100 | 1500/1700/1900 | 1400/1700/1900 |
| 最大卷筒纸直径 | Maximum web diameter | mm | 1800 | 1500 | 1800 | 1800 |
| 切断长度范围 | Cut-off length range | mm | 400-1700 | 400-1100 | 450-1650 | 400-1650 |
| 切断精度 | Cutting accuracy | mm | ±0.15 | ±0.1 | ±0.2 | ±0.3 |
| 最高切断速度 | Maximum cutting speed | m/min | 300 | 300 | 300 | 300 |
| 最高裁切刀数 | Maximum number of cutting knives | p/min | 460 | 600 | 460 | 350 |
| 收纸堆高度 | Delivery height(incl. pallet) | mm | 含托盘1700 | 含托盘1700 | 含托盘1500 | 含托盘1500 |
| 主电机功率 | main motor power | kw | 64 | 64 | 65 | 11 |
| 整机功率 | Total power | kw | 98/105 | 123 | 95 | 30 |
| 总重 | Gross weight | kg | 22000/24000/26000/28000 | 20000 | 14000/16000/19000 | 12000/13000/15000 |
| 气源要求 | Air source | bar | 6-8 | 6-8 | 6-8 | 6-8 |

機器速度表 MACHINE SPEEDOMETER

| 型號 | D110 | | D150 / D170 | | D190 | | E150 / E170 | |
|--------------------|----------------------|------------------------|----------------------|------------------------|----------------------|------------------------|----------------------|------------------------|
| 长度 Length mm | 米速 Speed m/min | 刀速 Speed cdu/min | 米速 Speed m/min | 刀速 Speed Cdu/min | 米速 Speed m/min | 刀速 Speed Cdu/min | 米速 Speed m/min | 刀速 Speed cdu/min |
| 400 | 210 | 525 | 120 | 300 | 114 | 285 | 125 | 281 |
| 450 | 258 | 575 | 150 | 333 | 142 | 315 | 160 | 320 |
| 500 | 300 | 600 | 195 | 390 | 185 | 370 | 195 | 351 |
| 550 | 300 | 545 | 235 | 427 | 223 | 405 | 230 | 376 |
| 600 | 300 | 500 | 265 | 442 | 251 | 418 | 265 | 397 |
| 650 | 300 | 460 | 300 | 462 | 300 | 462 | 300 | 416 |
| 700 | 300 | 428 | 300 | 429 | 300 | 429 | 300 | 386 |
| 750 | 300 | 400 | 300 | 400 | 300 | 400 | 300 | 360 |
| 800 | 300 | 375 | 300 | 375 | 300 | 375 | 300 | 337 |
| 850 | 300 | 353 | 300 | 353 | 300 | 353 | 300 | 318 |
| 900 | 300 | 333 | 300 | 333 | 300 | 333 | 300 | 300 |
| 950 | 300 | 316 | 300 | 316 | 300 | 316 | 300 | 284 |
| 1000 | 300 | 300 | 300 | 300 | 300 | 300 | 300 | 270 |
| 1100 | 290 | 264 | 290 | 264 | 290 | 264 | 293 | 240 |
| 1200 | 285 | 238 | 285 | 238 | 270 | 225 | 286 | 214 |
| 1300 | 280 | 215 | 280 | 215 | 266 | 166 | 279 | 210 |
| 1400 | 280 | 200 | 280 | 200 | 266 | 166 | 271 | 185 |
| 1500 | 280 | 187 | 280 | 187 | 266 | 166 | 264 | 170 |
| 1600 | 280 | 175 | 280 | 175 | 266 | 166 | 257 | 155 |
| 1700 | 275 | 162 | 275 | 162 | 261 | 153 | 250 | 135 |

注：由于產品在不斷的改革，數據如有改動，恕不另行通知。